

## ELECTRICAL SPECIFICATIONS

Parameter	Symbol	Min	Typ	Max	Unit
Frequency Range	BW	80.25		163.5	MHz
Insertion Loss	IL			0.1	dB
VSWR	VSWR			1.2:1	
Coupling Value	C	58.5		66.5	dB
Directivity	D	20.0			dB
Combined Power Rating	P <sub>O</sub>	5			kW

## MECHANICAL SPECIFICATIONS

Parameter	Value	Unit	
Dimension (Except Connectors)	154.6 x 90	mm	Typ.
Weight	2	kg	Typ.
Output Connector	1-5/8" EIA		
Input Connector	1-5/8" EIA		
Coupler Connector	N-Type Female		

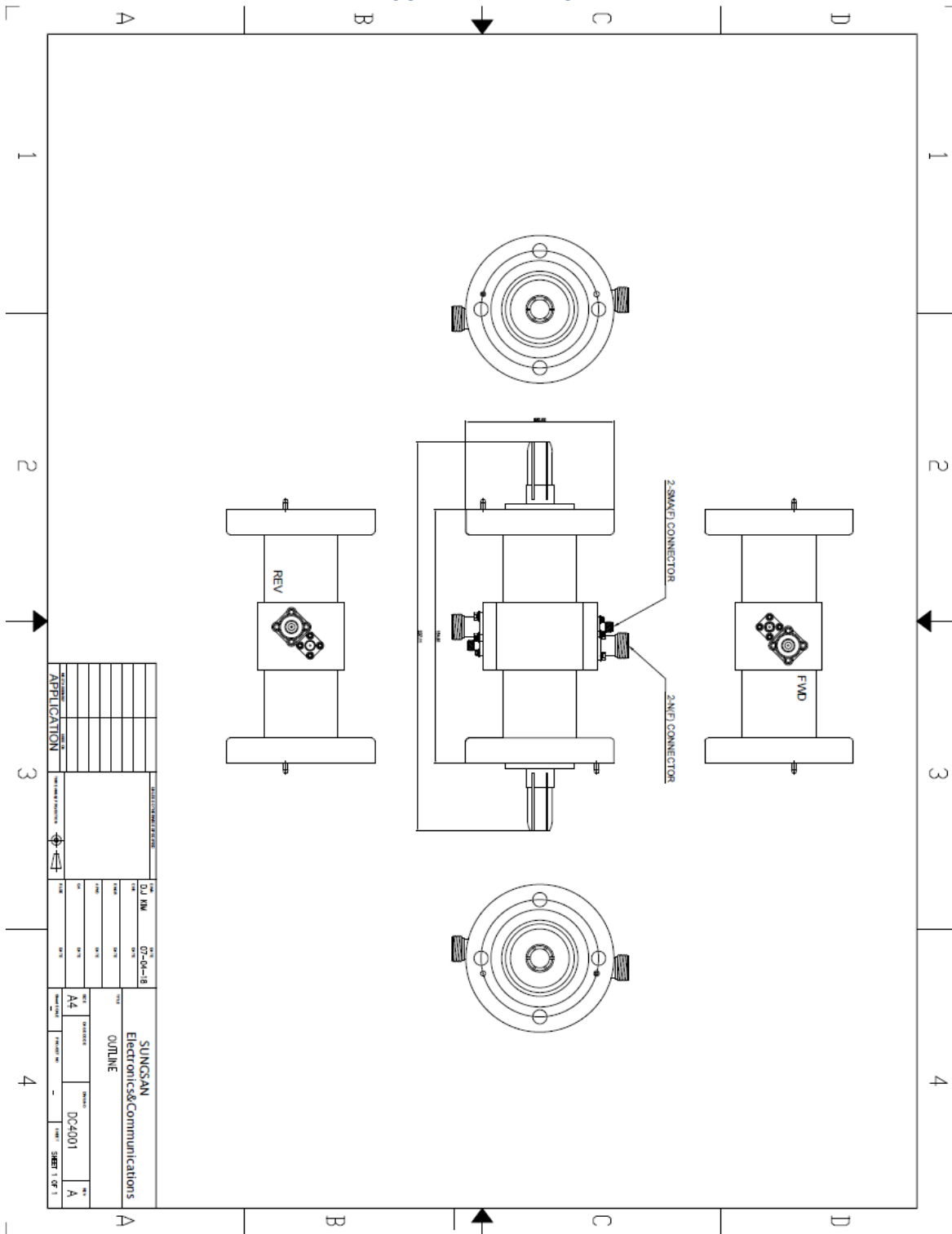
## ENVIRONMENTAL CHARACTERISTICS

Parameter	Symbol	Min	Typ	Max	Unit
Operating Ambient Temperature	T	-20		+70	°C
Storage Temperature	T <sub>STG</sub>	-40		+85	°C

## RF CONNECTORS

Port #	Description	Specifications
J1	Input	Coupling Main Line Input
J2	Output	Through
J3	FWD	-
J4	REV	-

## OUTLINE DRAWING



APPLICATION		DATE		REV		DRAWN		CHECKED		APPROVED	
SUNGSAN Electronics & Communications		DCU801P5000-60		OUTLINE		DC-4001		A		SHEET 1 OF 1	